

## CHEMICAL SPLASH COAT

### MODEL 448



The use of chemicals in laboratory work can prove a constant hazard to conventional polyester cotton blends. The use, however of Chem-Tech material offers an excellent level of protection meeting the conformance shown below. Supervisory staff who may come into contact with liquid chemicals on an irregular basis could also use this coat.

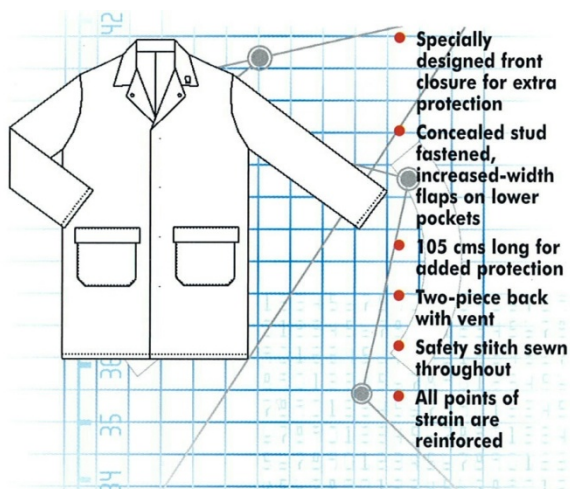
Fabric: 100% polyester with a fluorochemical liquid repellent finish, 270 g/m<sup>2</sup>

Stock Colours: White

Special Order Colours: Grey, Navy

*For other colours contact our Sales Office*

### INFO



### FEATURES

prEN 13034 1997 Protective Clothing against Liquid Chemicals – Performance Requirement for Chemical Protective Performance Against Liquid Chemicals

### USAGE

Plating activities  
Solvent manufacturers  
Waste disposal  
Hazardous substances